

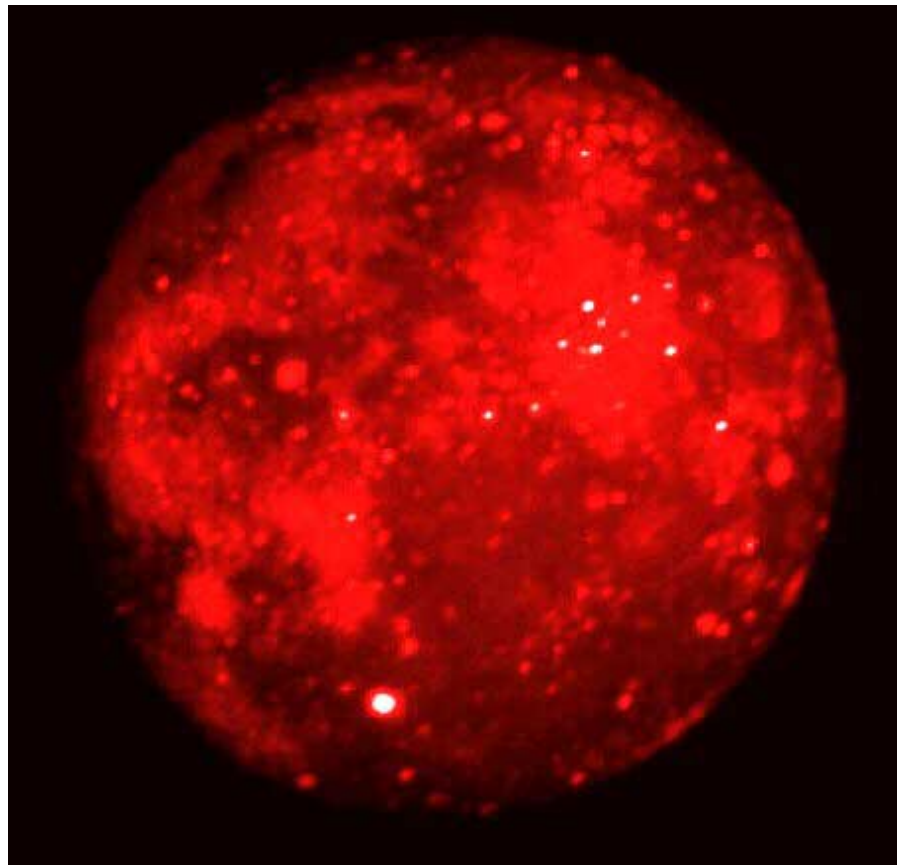
1. Moon

Visible



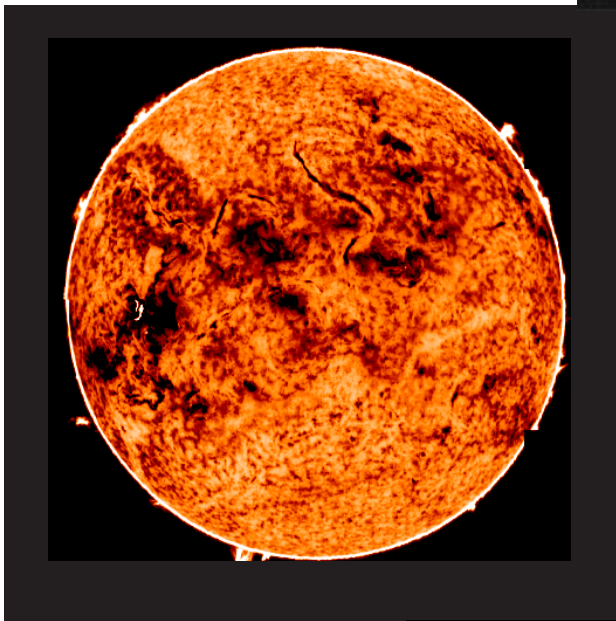
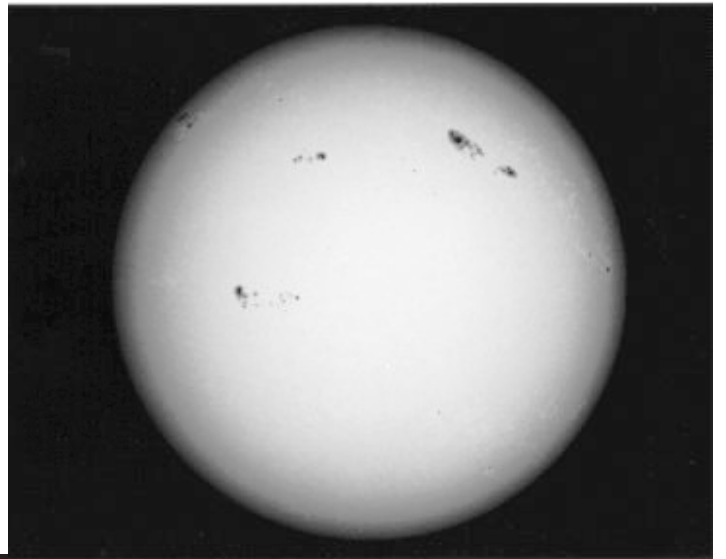
Full moon as seen from Apollo 11

Infrared

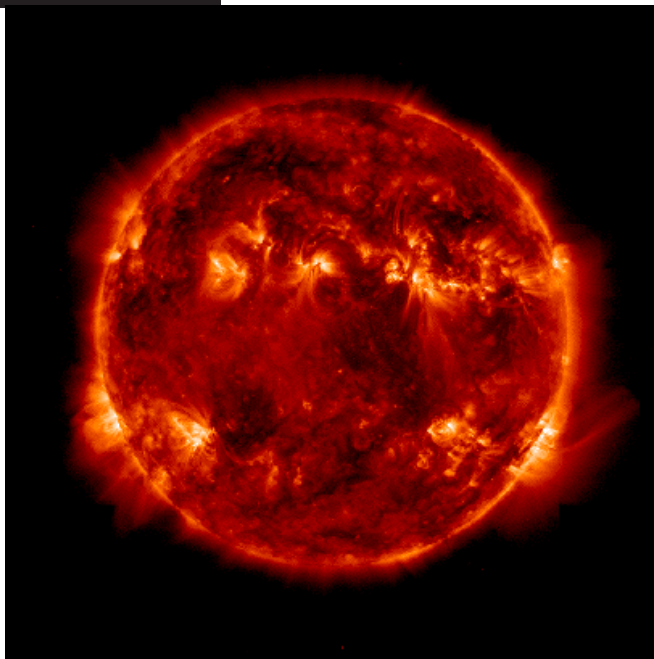


2. Sun

Visible



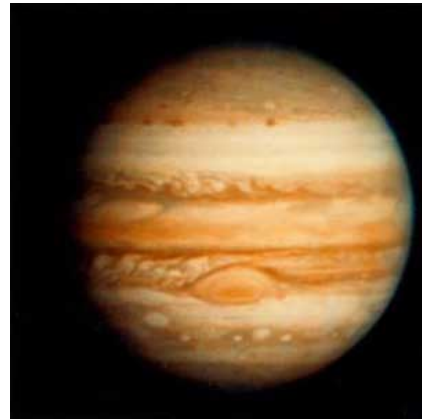
Infrared



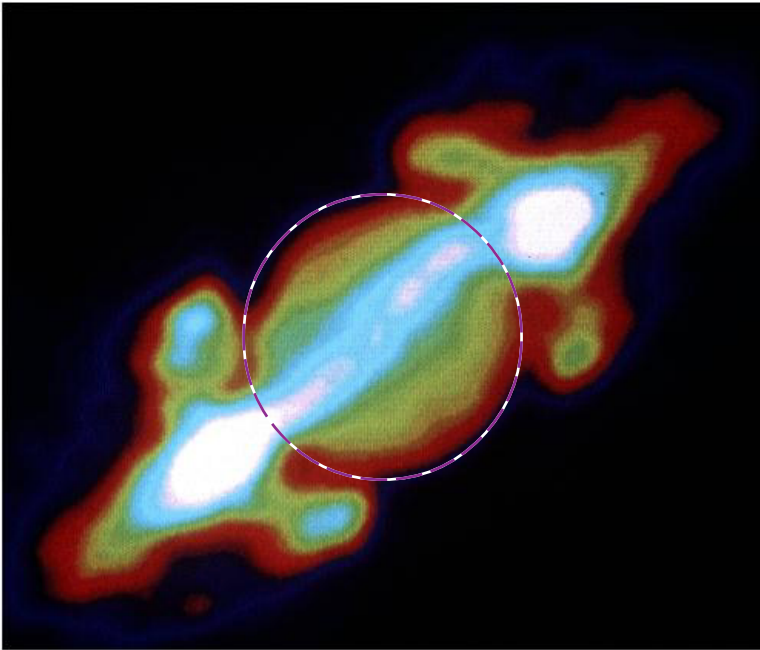
X-ray

3. Jupiter

Visible



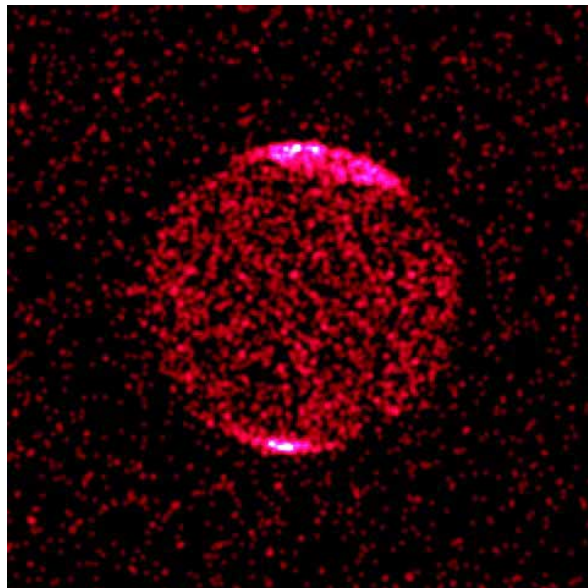
Credit: NASA, 1979.



U.S. National Radio Astronomy Observatory

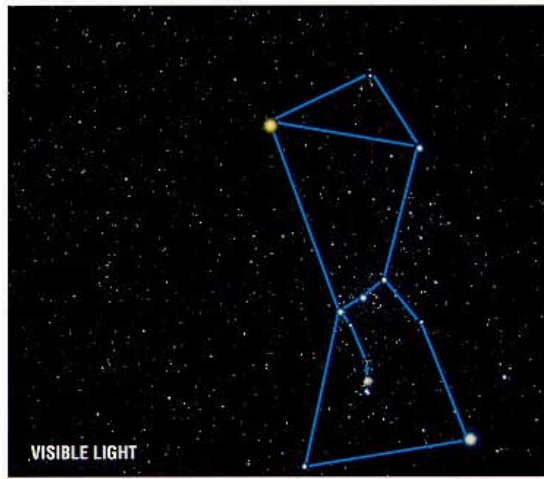
Radio

X-ray



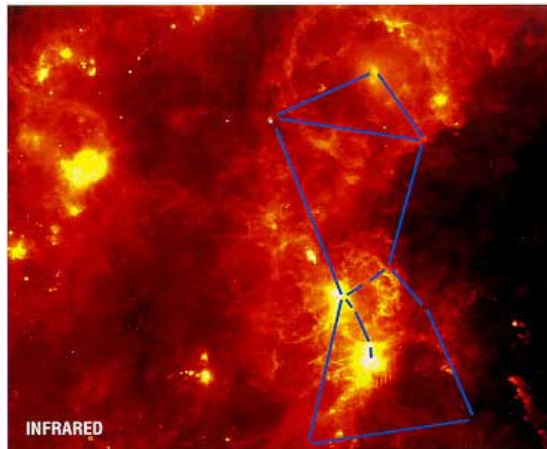
Credit: NASA/CXC/SWRI/G.R. Gladstone et al

4. Great Nebula in Orion

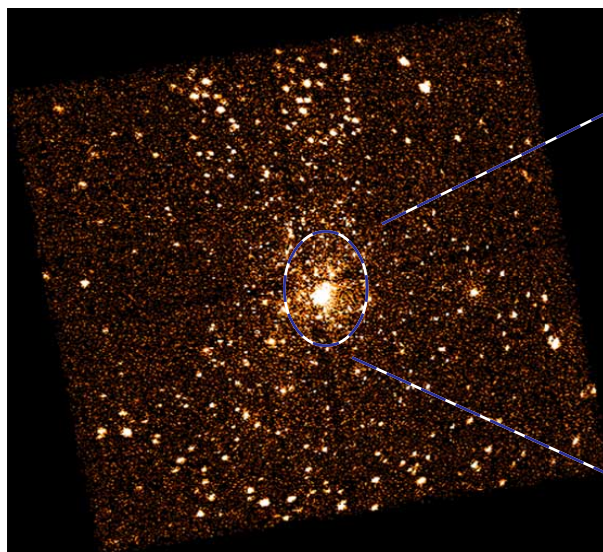


Visible

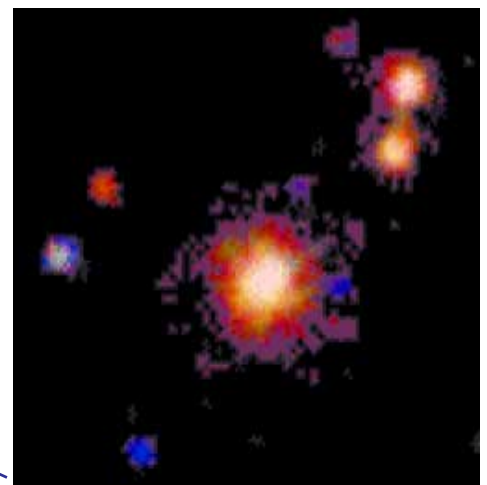
Note: Light blue lines show the constellation of Orion.



Infrared



X-ray



X-ray

5. Cat's Eye Nebula

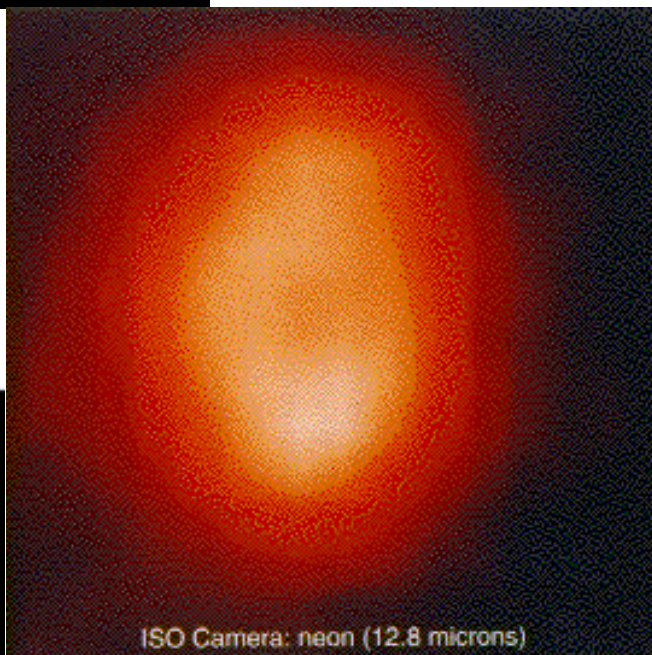
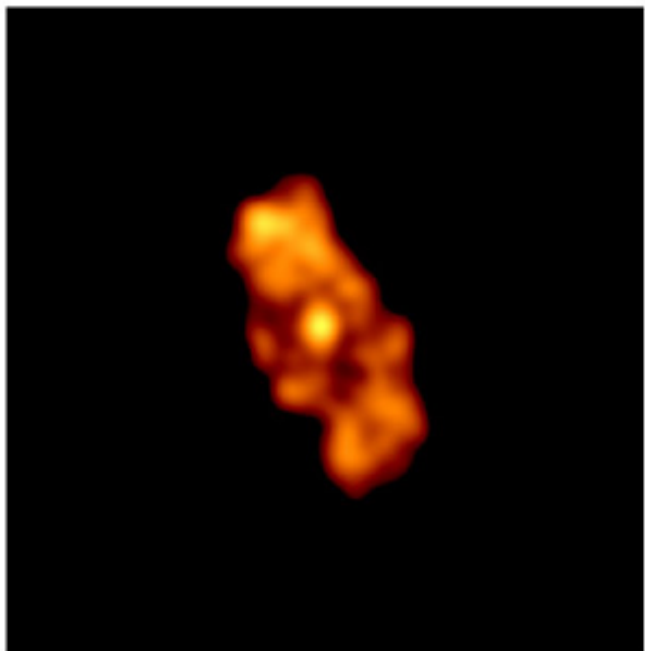


Visible

NASA, Hubble Space Telescope

Infrared

Chandra X-ray satellite



ISO Camera: neon (12.8 microns)

ESA/ISO, CEA Saclay and ISOCAM Consortium

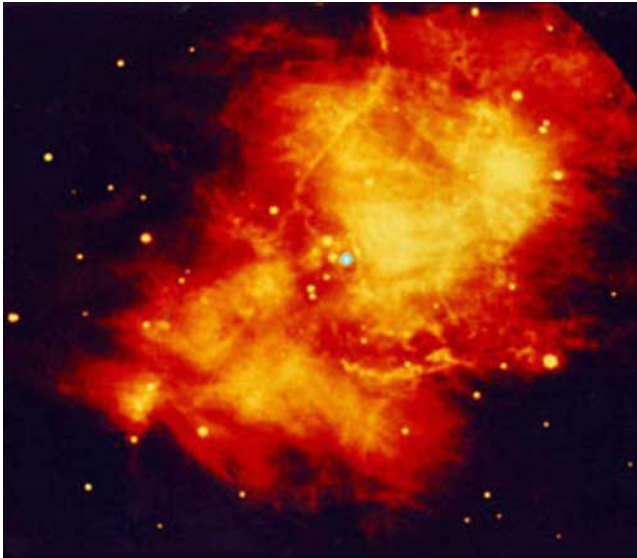
X-ray

6. Crab Nebula

Visible



NASA Goddard Space Flight Center



Keck Telescope

Infrared

X-ray



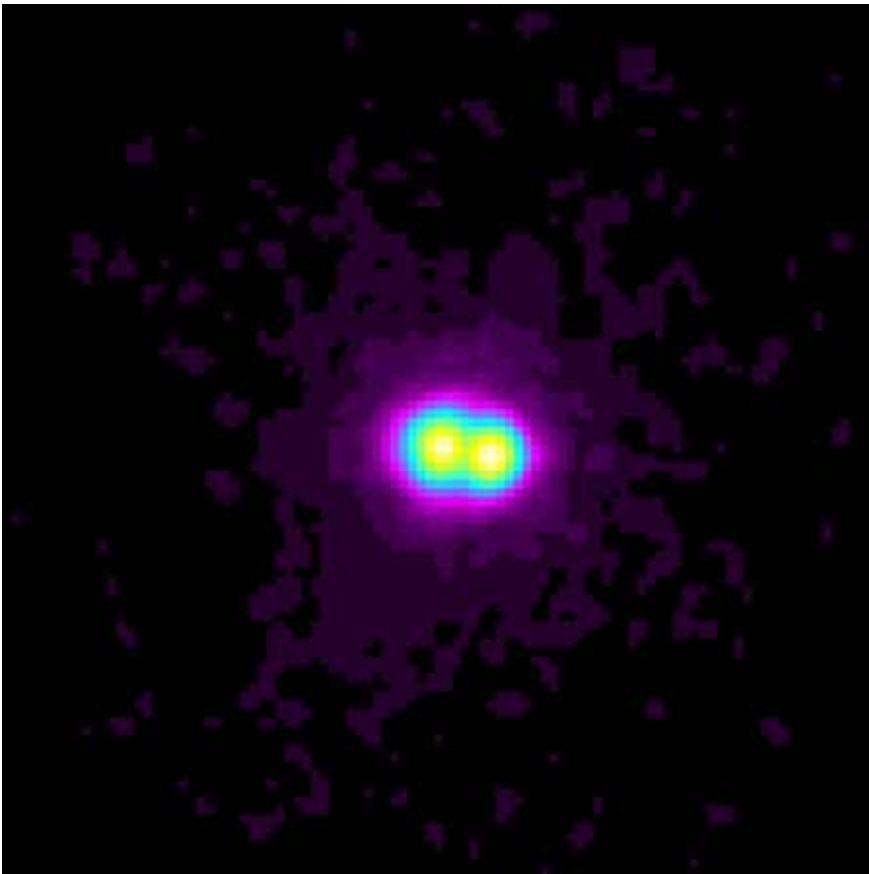
*Chandra X-ray Observatory Center
Harvard-Smithsonian Center for Astrophysics
<http://chandra.harvard.edu>*

7. Globular Cluster (M15)

Visible



The Electronic Universe Project
<http://zebu.uoregon.edu/messier.html>



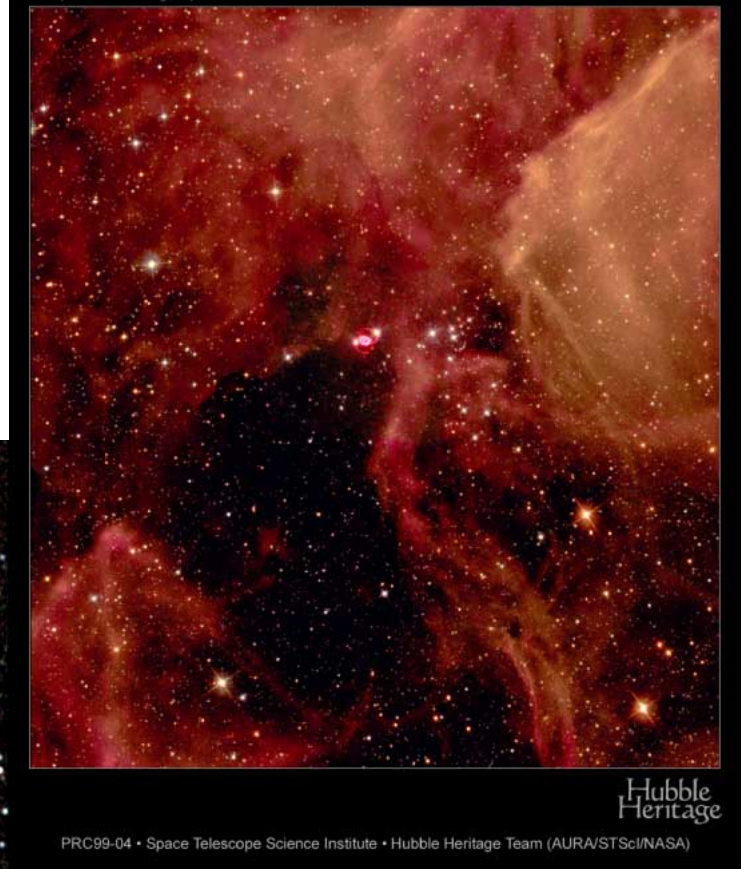
X-ray

Chandra X-ray Observatory Center
Harvard-Smithsonian Center for
Astrophysics
<http://chandra.harvard.edu>

8. Supernova 1987A

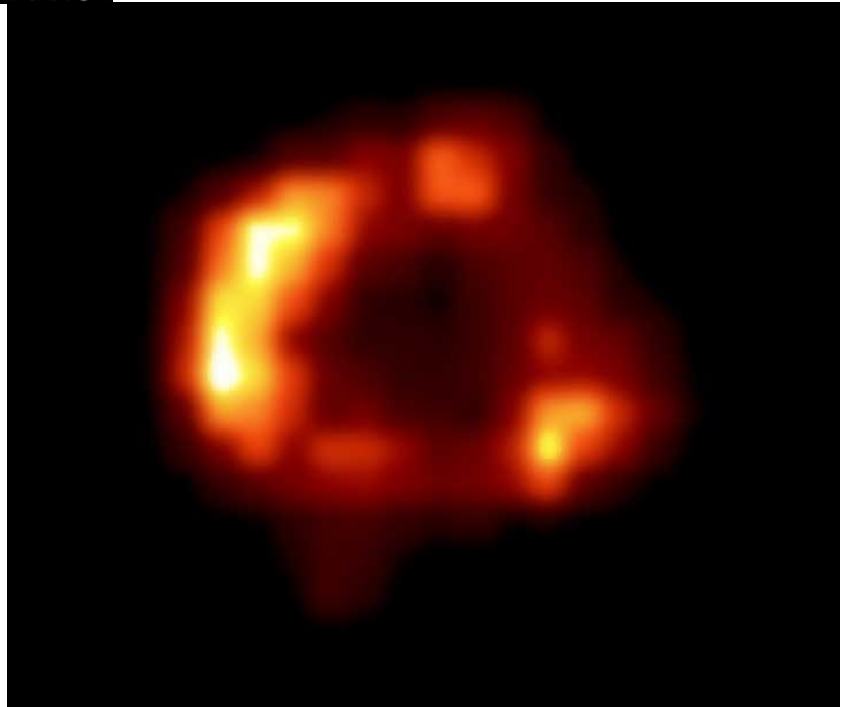
Visible

Infrared



X-ray

*Chandra X-ray Observatory Center
Harvard-Smithsonian Center for
Astrophysics
<http://chandra.harvard.edu>*



9. Galaxy M 51 (The Whirlpool Galaxy)

All these images appear at <http://sirtf.caltech.edu/Education/Messier/m51.html>

Visible

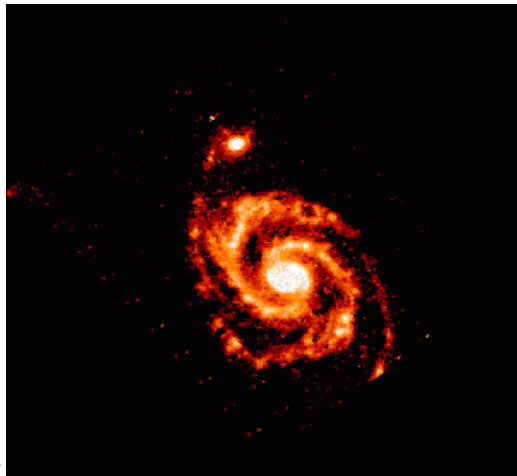


Telescopes in Education (TIE), Mount Wilson Institute and Jet Propulsion Laboratory



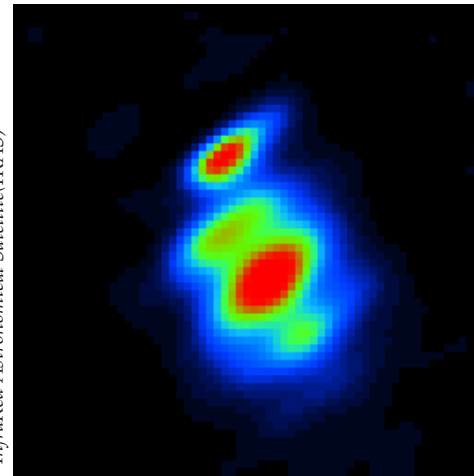
Two-Micron All-Sky Survey (2MASS)

Near Infrared



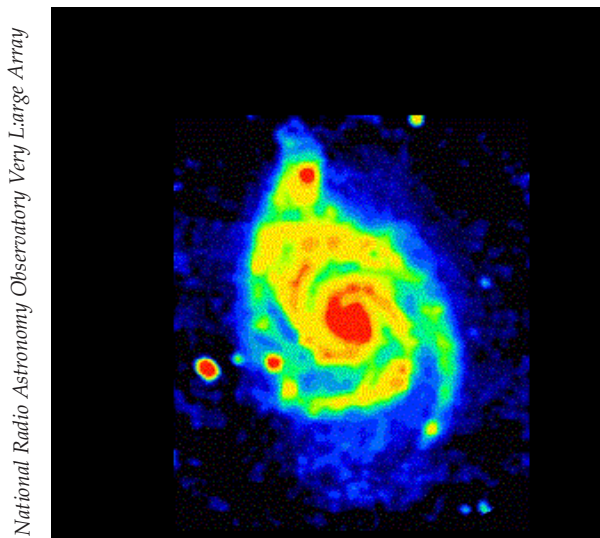
Infrared Astronomical Satellite (IRAS)

Mid-Infrared



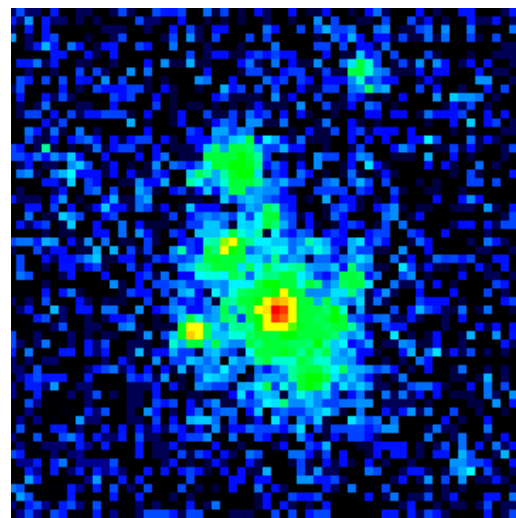
Infrared Astronomical Satellite (IRAS)

Far-Infrared



National Radio Astronomy Observatory Very Large Array

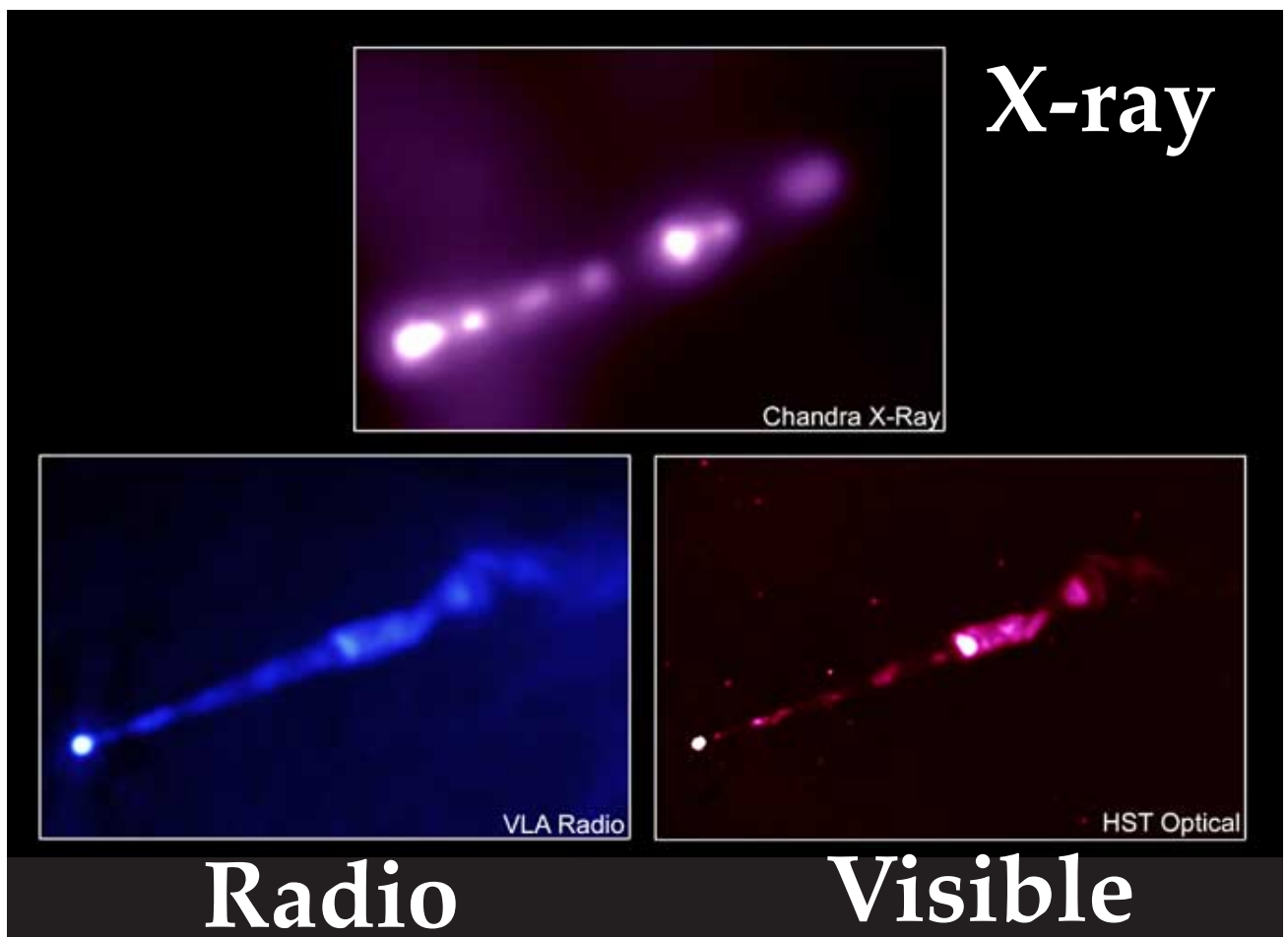
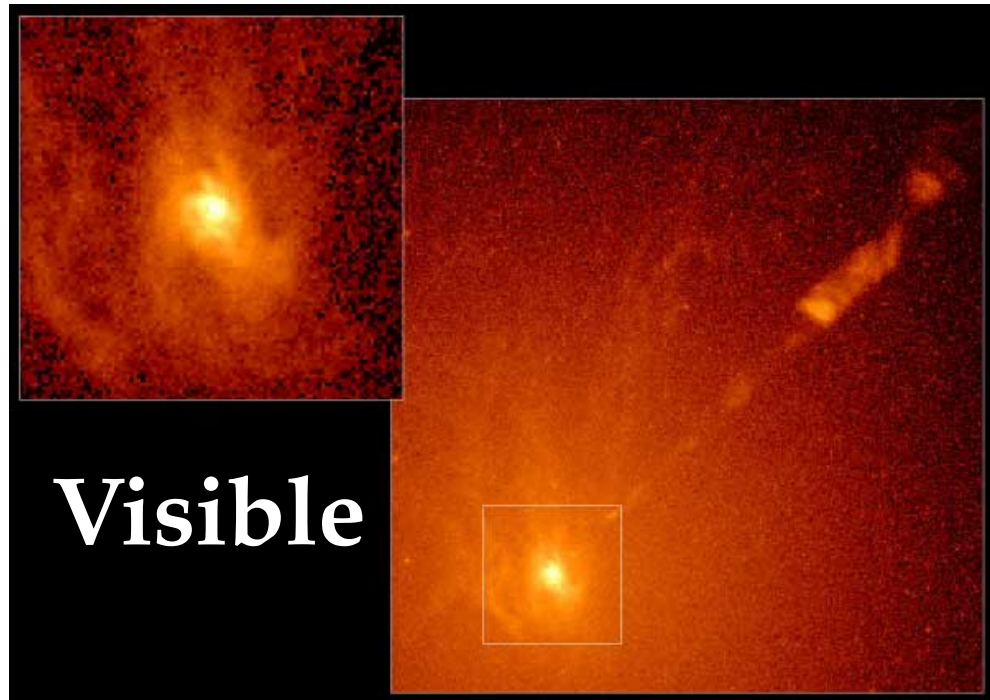
Radio



Röntgen Satellite (ROSAT)

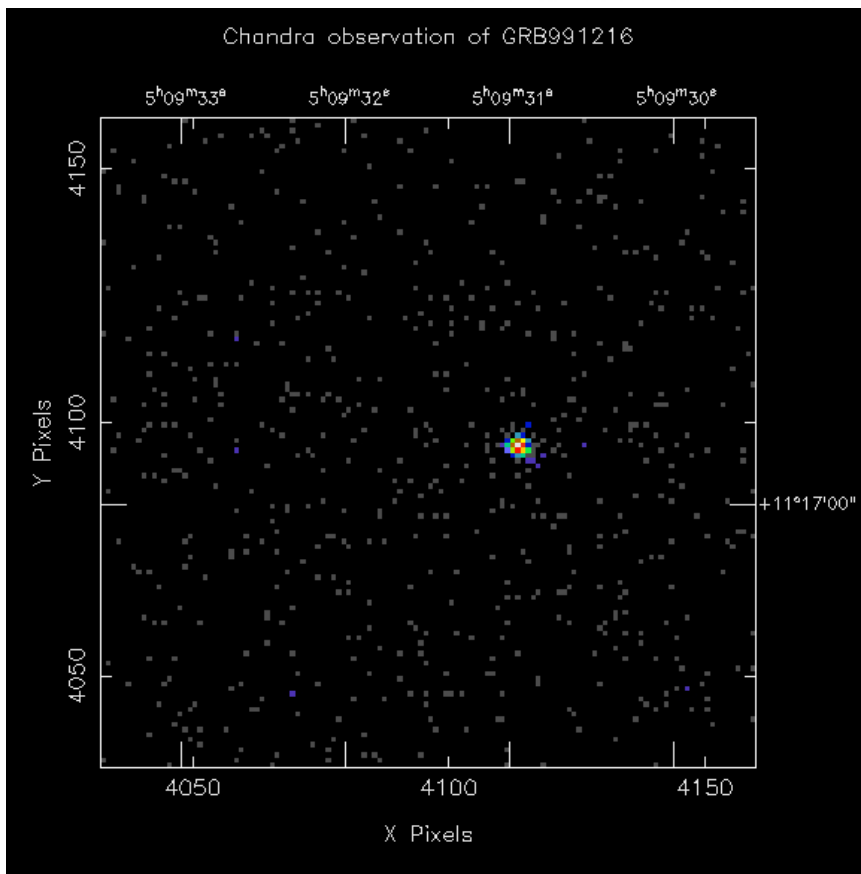
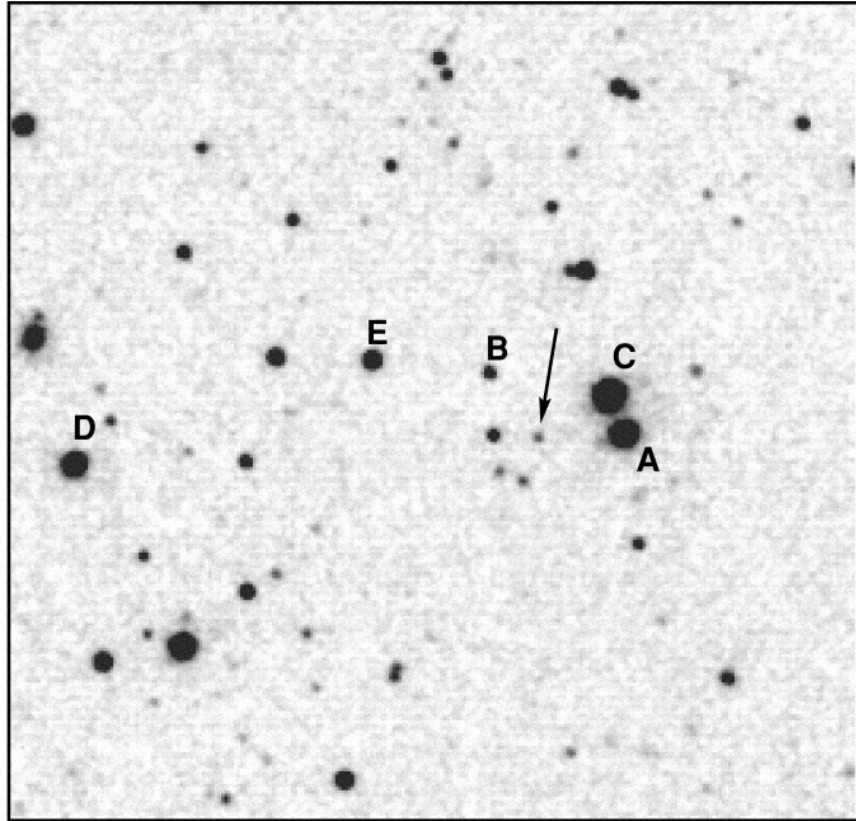
X-ray

10. Black Hole/Jet in Galaxy M87



11. Gamma-ray Burst 991216

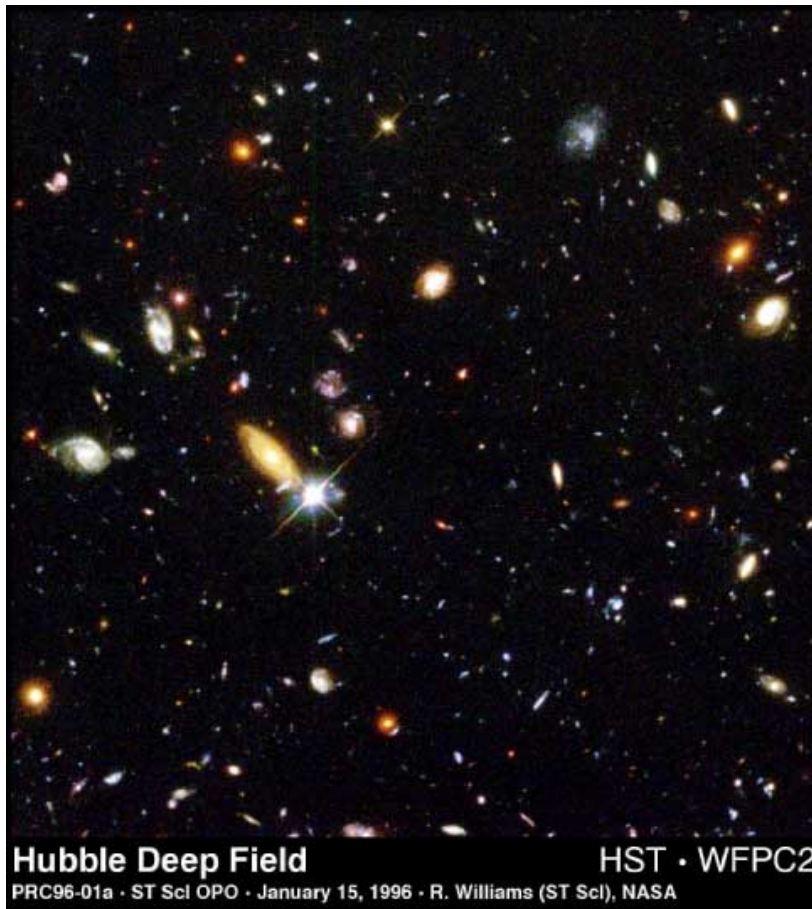
Visible



X-ray

Chandra X-ray Observatory Center
Harvard-Smithsonian Center for Astrophysics
<http://chandra.harvard.edu>

12. Early Universe



Visible

X-ray

